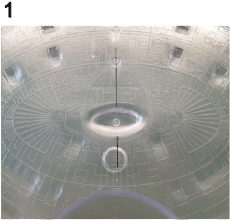


# MOTION PICTURE MINIATURES

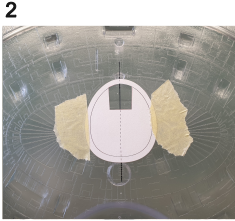
[www.motionpictureminiatures.com](http://www.motionpictureminiatures.com)

The following instructions are only intended to be a very basic guide for assembly. The builder is encouraged to use their own best judgment on how to approach the assembly of the parts, depending on their own specific goals for their project.

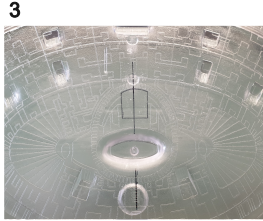
1 - Using the grid lines as a guide, mark a centre line as shown



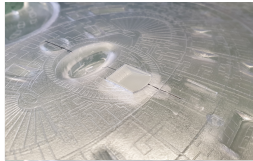
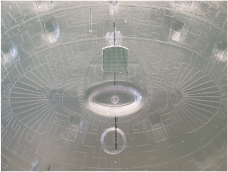
2 - Temporarily attach the template, ensuring it sits over the moulded oval detail. Align both centre lines.



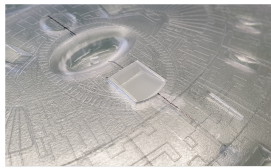
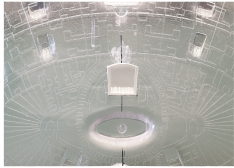
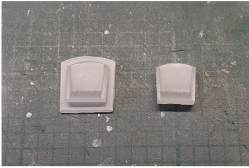
3 - Mark the cut-out on the part using a pen or pencil



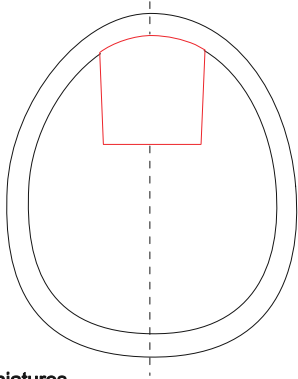
Remove the marked material, use files and sanding sticks to refine the shape until the part fits cleanly and flush with the surface.



You may find it beneficial to remove the outer lip of the replacement part to aid fitting and alignment. Remove the material as shown below if desired.



Centre line



Alignment template

Cut out shape indicated in red

[www.facebook.com/mpminiatures](https://www.facebook.com/mpminiatures)